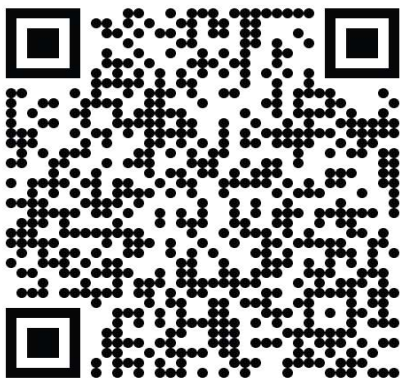


CEIA OPENGATE™ Fabric Sleeves



OPENGATE BACK

OPENGATE FRONT

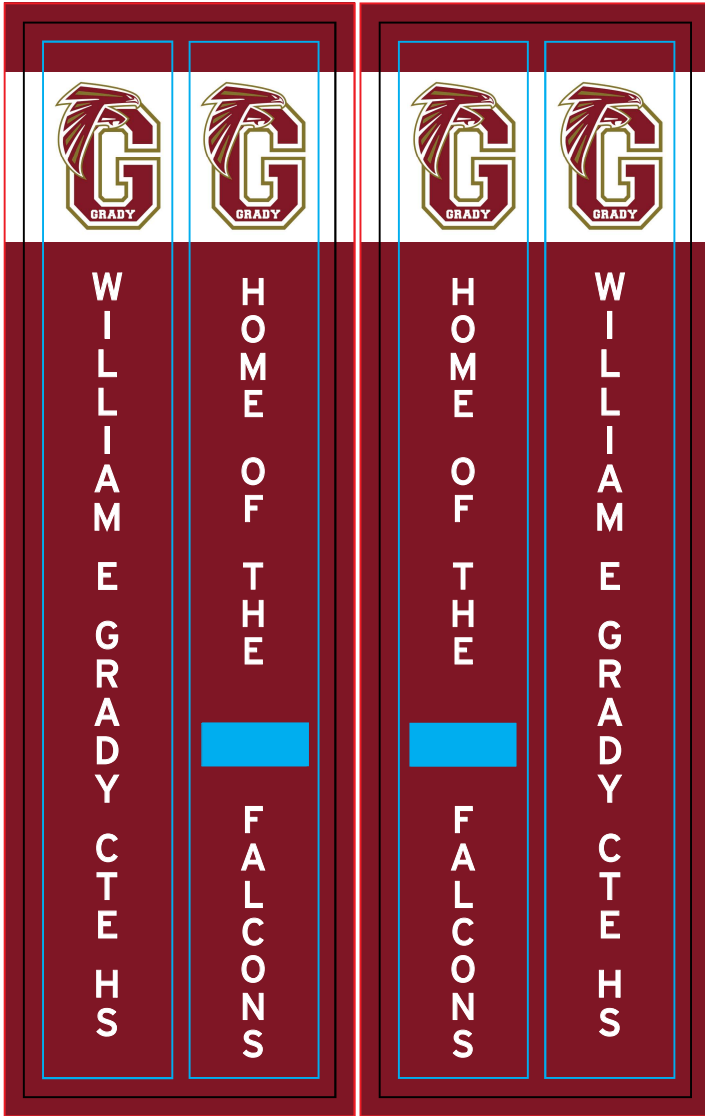


Resources & Order Information



OPENGATE™ Sleeve Template

Example Layout

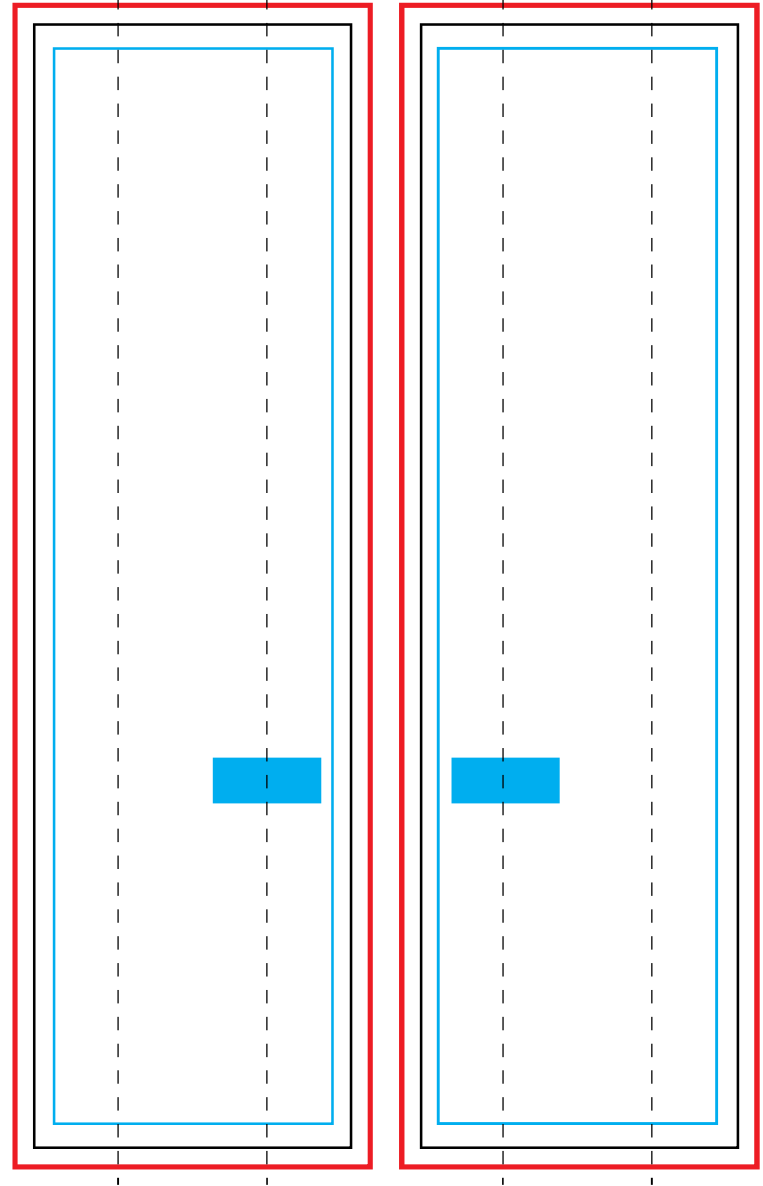






Left Cover


Front Back

Right Cover

Back Front



-  Cut
-  Safety
-  Bleed
-  Vertical Center Line

 Cutout for handle openings on back face

Scale 1:10

Overall Panel Size 16.5" w x 58.5" h
 Art Safety Size* 14.5" w x 56" h
 Bleed Size 18.5" w x 60.5" h

*Keep all critical text and images within the Art Safety Size to ensure visibility



Art Guidelines

Please follow these guidelines to help ensure your project is produced in a timely manner and with the best quality. Delays and/or additional cost may be incurred if art is not print ready.

PREFERRED ART FORMATS:

- .PDF
- .EPS
- .AI
- .PSD
- .INDD package

RESOLUTION

75 - 100 dpi

DO:

- Use Adobe Illustrator, Photoshop, or InDesign
- Convert all fonts to outlines or rasterize type layers in Photoshop files
- Maintain all links and provide with the design files
- Convert files to CMYK mode

DON'T:

- Do not embed linked files
- Do not flatten layers in Photoshop files
- Do not flatten transparencies or other effects
- Do not use perimeter borders. Due to fabric stretch, we cannot guarantee an equal trim border.
- We recommend against using a primarily white background color to preserve a cleanly appearance.

[Submit Art Files Here](#)